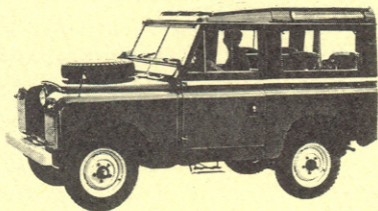




OVERSEAS DELIVERY PLAN



THE ROVER MOTOR COMPANY
OF NORTH AMERICA LIMITED

405 LEXINGTON AVE., NEW YORK, N.Y. 10017
1040 BAYVIEW DR., FT. LAUDERDALE, FLA. 33304
373 SHAW ROAD, SO. SAN FRANCISCO, CALIF. 94080
10889 WILSHIRE BLVD., LOS ANGELES, CALIF. 90024

OVERSEAS DELIVERY PRICES

(Retail price in U.S. dollars at Factory in England.)

88" WHEELBASE - *with gasoline engine

Canvas Top (Full length - inc. Side Windows) ..	\$2086
Hard Top (Full length - inc. Side Windows) . . .	2154
Truck Cab (1/2 ton Pick-Up - open rear body) .	2092
Station Wagon (7 passenger - fully enclosed) ..	2448

109" WHEELBASE - *with gasoline engine

Canvas Top (Full length - inc. Side Windows) ..	\$2340
Hard Top (Full length - inc. Side Windows) . . .	2442
Truck Cab (1 ton Pick-Up - open rear body) ..	2332
Station Wagon (10 passengers)	2817
Station Wagon (12 passengers)	2845
Camper (4 berth fully enclosed)	3573

* Additional cost of Diesel — all models: \$320.

PRICES INCLUDE

Non-corrosive aluminum alloy body, 4-wheel drive, fully floating front and rear axles, eight speeds forward and two reverse, all metal side doors with external handles and sliding windows, towing jaw, oil bath air cleaner, full-flow oil filter, windshield ventilators, windshield wiper (driver's side), five tires (tread optional), fender rear view mirror, interior rear view mirror - excepting canvas top models, door locks - excepting 88 canvas hard top and truck cab models, tool kit, wheelbrace, jack, starting handle, headlamps suitable for country of consignment, seats for driver and two passengers. Station Wagons have additional seating, tropical roof, roof ventilators, insulating trim, flashing directional signals, folding rear step, full length rear door, rubber floor mats, Camper has seats and bunks for 4 persons, elevating roof, cooking stove, table, sink, closets and water containers.

North American laminated windshield, North American sealed beams, left hand drive, interior rear view mirror, door locks, rubber pedal pads, oil pressure and water temperature gauge, seats in rear, two windshield wipers, ash tray, modified clutch, flashing directional signals.

March 1965



LAND-ROVER STATION WAGON
88" wheelbase, 7 passenger

VERSATILE LAND-ROVER

The LAND-ROVER is in many ways the most sophisticated vehicle you can buy today.

On your trip overseas, you can drive it ANYWHERE, see much more because you sit higher, load it to the gunwhales. And it's comfortable.

When you bring it home, if you're a commuter, you can go to the station or drive the children to school through several feet of snow; you can use it to mow your grass, plow your drive, power your log saw, or run it as a beach buggy. If you are a hunter, mining engineer, a prospector, explorer or a lumberman, you can put it to the most rugged use.

The body is of aluminum alloy and galvanized steel so that it won't rust or corrode. There are now almost half a million Land-Rovers in use in 157 countries.

OPTIONAL EQUIPMENT

Flyscreens for front dash vents	\$ 3.86
Hand Throttle Control.....	3.40
Re-circulating Heater and Demister	32.05
Radio (AM) Medium Wave.....	101.08
Radio Interference Suppressors	2.80
Roof Rack on Hard Tops.....	42.20
Spare Wheel Carrier on Hood.....	3.50
Folding Side Steps - two pairs	28.00
Twin Interior Sun Visors	2.80
Underseal on 88" models	40.60
Underseal on 109" models	44.80
Front Lifting and Towing Rings	3.86
Safety Harness, Irvin (front only)	49.00
North American Export Pack.....	varies

Over 180 pieces of optional equipment are offered. For further information please apply to the Overseas Delivery Department - The Rover Motor Company of North America Limited, 405 Lexington Avenue, New York 17, N. Y.